



Easy Chess Puzzle # 0106

By

G Bud Games
<https://gbud.in>

January 15, 2022

Contents

Easy Chess puzzle # 0106 - Mate in 2 moves	3
Easy chess puzzle 0106	3
Solution to easy chess puzzle 0106	4
Solution 1	4
Right moves for the solution to the easy chess puzzle 0106	6
Explanation for the moves	6
Categories of easy chess puzzle 0106	7
easy chess puzzle 0106 chart	7
How to view the solution to easy chess puzzle 0106	9
How to get help for moves in the easy chess puzzle 0106	10
Play chess for free	11

List of Figures

1	Solve this easy chess puzzle 0106. Mate in 2 moves @ https://gbud.in/gwdj291	3	
2	Solve this chess puzzle online with solution @ https://gbud.in/gwdj291	3	
3	Initial board position of easy chess puzzle 0106	4	
4	Qxh3+	5	
5	Kg1	5	
6	Rg8#	6	
7	easy chess puzzle 106 chart 1	7	
8	easy chess puzzle 106 chart 2	8	
9	easy chess puzzle 106 chart 3	8	
10	easy chess puzzle 106 chart 4	9	
11	Click the solution button to view solutions @ https://gbud.in/gwdj291	9	
12	Click the help button to get help on next move @ https://gbud.in/gwdj291	10	
13	Solve more easy puzzles @ https://gbud.in/chsezpz	10	
14	Solve other puzzles @ https://gbud.in/chsgppz	10	
15	Play chess online for free. Solve puzzles and play with friends	11	
16	Solve this puzzle online by scanning this QR code or go to the link below	12	

Easy Chess puzzle # 0106 - Mate in 2 moves

Solve this easy chess puzzle and improve your chess games through improvement of your chess strategies and chess tactics.

Puzzle No : 0106

Difficulty level : Easy

Description : Mate in 2 moves

Next Move : Black

Player level : Beginner

Short URL for puzzle : <https://gbud.in/gwdj291>

Easy chess puzzle 0106

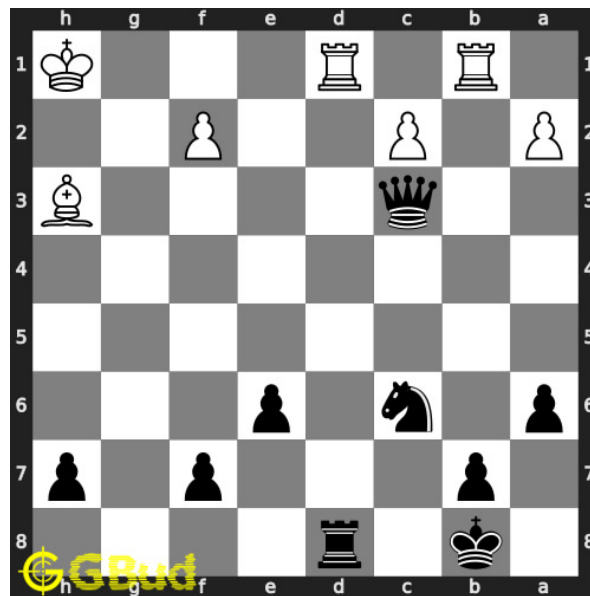


Figure 1: Solve this easy chess puzzle 0106. Mate in 2 moves @ <https://gbud.in/gwdj291>



Figure 2: Solve this chess puzzle online with solution @ <https://gbud.in/gwdj291>

Dont forget to check out [chess puzzles](#), [easy chess puzzles](#), [medium chess puzzles](#), [hard chess puzzles](#) and [chess puzzles collections](#) .

Solution to easy chess puzzle 0106

At this puzzle, next move is by **Black**. The objective of the puzzle is to mate in 2 moves.

See the interactive solution at the [puzzle page](#)

Solution 1

Initial board position This is the initial board position of easy chess puzzle 0106.

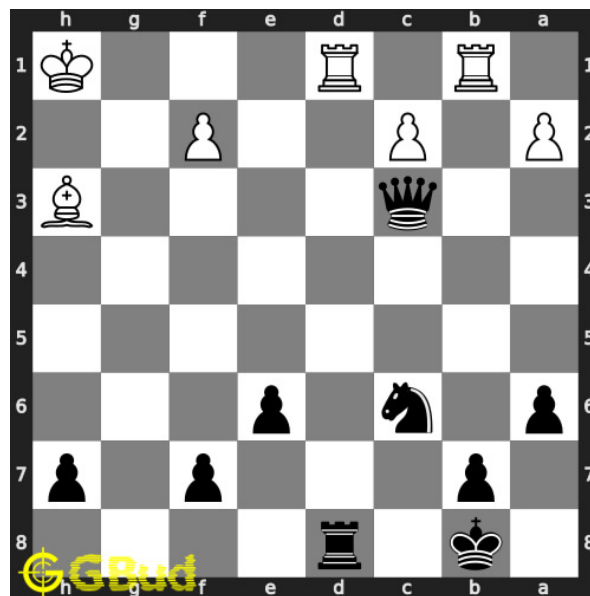


Figure 3: Initial board position of easy chess puzzle 0106

Move 1 Move by black

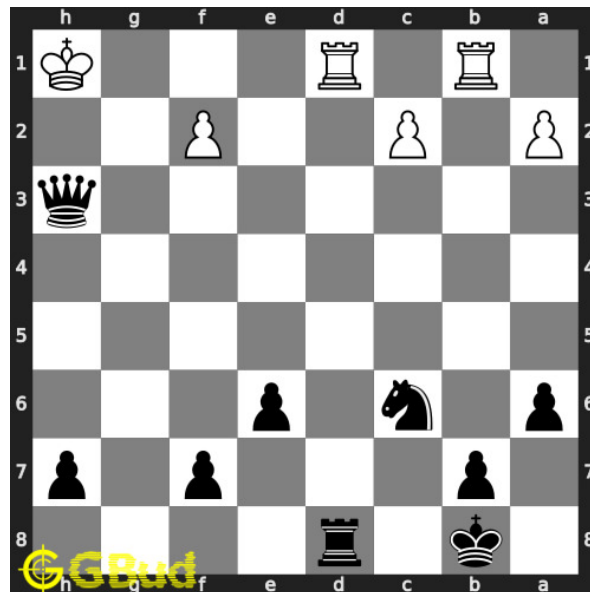


Figure 4: Qxh3+

your **queen captures** opponent's **bishop** and gives **check**.

Move 2 Move by white

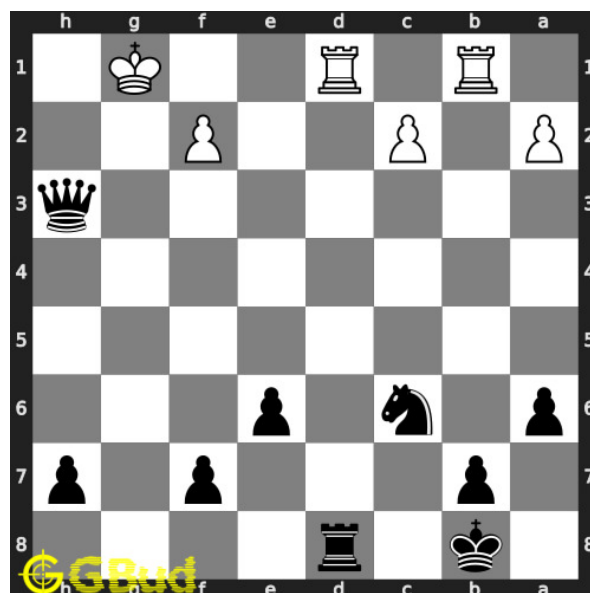


Figure 5: Kg1

opponent's **king moves** to **g1** as this is the only legal **move** available.

Move 3 Move by black

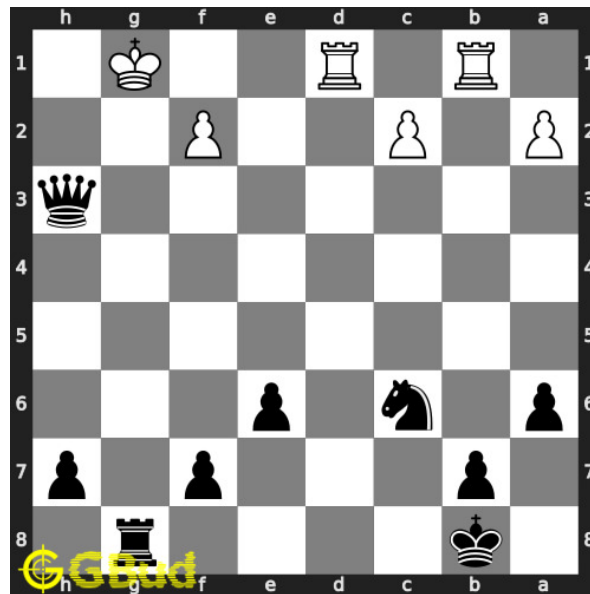


Figure 6: Rg8#

your **rook** moves to **g8** and **checkmate**. opponent's **king** has no free **squares** to **move** due to the attack from your **queen**.. this is how you can **mate** in 2 **moves**.

Right moves for the solution to the easy chess puzzle 0106

Based on the objective of the puzzle, you have to make the right moves. Following are the right moves

1. Qxh3+, Rg8#

Explanation for the moves

1. Qxh3+ - Your queen captures opponent's bishop and gives check.
2. Kg1 - Opponent's king moves to g1 as this is the only legal move available.
3. Rg8# - Your rook moves to g8 and checkmate. Opponent's king has no free squares to move due to the attack from your queen.. This is how you can mate in 2 moves.
4. For right move - Good effort. You won effortlessly.
5. For wrong move - You could have moved your queen and rook to mate in 2 moves. Try again

Categories of easy chess puzzle 0106

This easy chess puzzle falls in these categories.

1. [Easy chess puzzles](#)
2. [Mate in 1 puzzles in chess](#)
3. [Endgame puzzles in chess](#)
4. [Rook puzzles in chess](#)
5. [Queen puzzles in chess](#)

easy chess puzzle 0106 chart



Figure 7: easy chess puzzle 106 chart 1



Figure 8: easy chess puzzle 106 chart 2



Figure 9: easy chess puzzle 106 chart 3

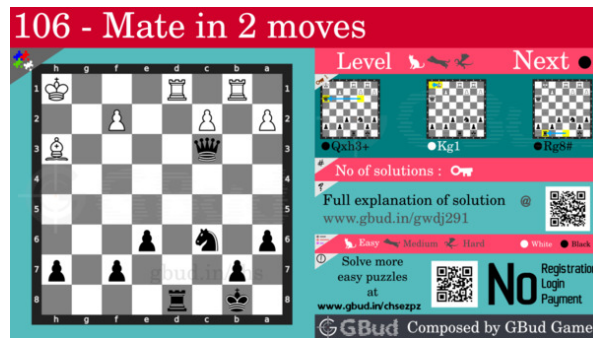


Figure 10: easy chess puzzle 106 chart 4

How to view the solution to easy chess puzzle 0106

To view the [solution to this puzzle](https://gbud.in/gwdj291), follow the steps given below

1. Go to the [puzzle page](https://gbud.in/gwdj291)
2. Click the solution button (Key as shown [below](https://gbud.in/gwdj291)) to view the solution



Figure 11: Click the solution button to view solutions @ <https://gbud.in/gwdj291>

How to get help for moves in the easy chess puzzle 0106

To get help or the possible next moves in the puzzle, , follow the steps given below

1. Go to the [puzzle page](#)
2. Click the help button (exclamation mark as shown [below](#)) to get help or suggestion on next possible [move](#)



Figure 12: Click the help button to get help on next move @ <https://gbud.in/gwdj291>



Figure 13: Solve more easy puzzles @ <https://gbud.in/chsezpz>



Figure 14: Solve other puzzles @ <https://gbud.in/chsgppz>

Play chess for free

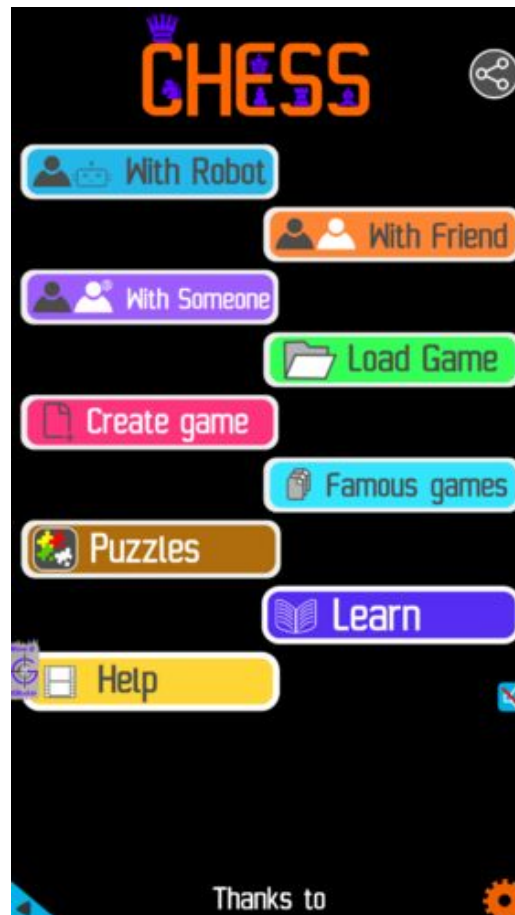


Figure 15: Play chess online for free. Solve puzzles and play with friends

Play chess for free at <https://gbud.in/chs>

We present you a platform to play chess online with friends for free. No need to install any app. You can play chess for free without registration or login.

Simple. You can do several chess related activities.

1. [solve chess puzzles](#)
2. [learn about chess](#)
3. [play chess with computer](#)
4. [play chess with friend](#)
5. [create your own chess games](#)

6. [fen viewer](#)
7. [fen editor](#)
8. [fen generator](#)
9. [pgn viewer](#)
10. [chess board editor](#)
11. [view famous chess games.](#)



Figure 16: Solve this puzzle online by scanning this QR code or go to the link below

<https://gbud.in/gwdj291>

Read the latest article on Easy Chess puzzle # 0106 - Mate in 2 moves by scanning this QR code or click the link

Previous article : « [Easy Chess puzzle # 0105 - Use opponent's mistake](#)

Next article : [Easy chess puzzles](#) »

[Back to top](#)

[Contact Us](#)